

# UES1101-UES1103

## 2.5A HIGH EFFICIENCY RECTIFIERS

### FEATURES

- Available as "HR" (high reliability) screened per MIL-PRF-19500, JANTX level. Add "HR" suffix to base part number.
- Available as non-RoHS (Sn/Pb plating), standard, and as RoHS by adding "-PBF" suffix.

### MAXIMUM RATINGS

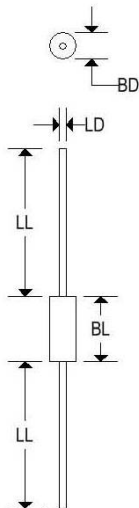
Rating	Symbol	UES1101	UES1102	UES1103	Unit
Peak inverse voltage	$V_R$	50	100	150	V
Maximum average DC output at $T_L = 75^\circ\text{C}$ , $L = 3/8"$	$I_O$	2.5			A
Non-repetitive surge current at 8.3ms	$I_{FSM}$	35			A
Thermal resistance at $L = 3/8"$	$R_{\theta JC}$	38			$^\circ\text{C}/\text{W}$
Junction operating temperature	$T_J$	175			$^\circ\text{C}$
Operating and storage temperature range	$T_{op}$ , $T_{stg}$	-55 to 175			$^\circ\text{C}$

### ELECTRICAL CHARACTERISTICS

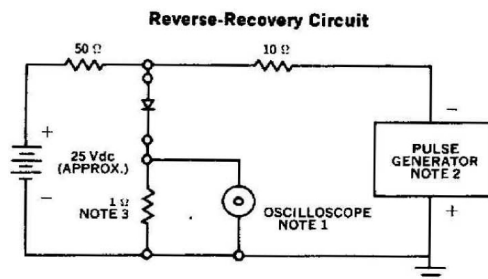
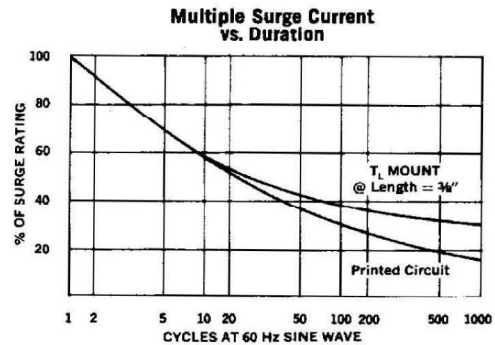
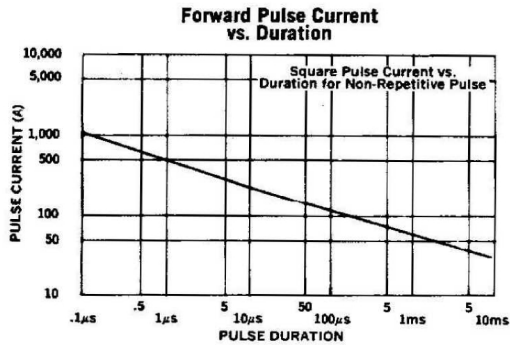
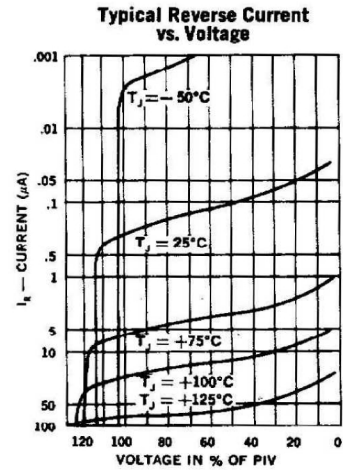
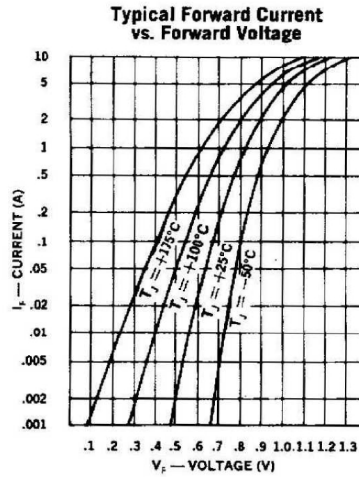
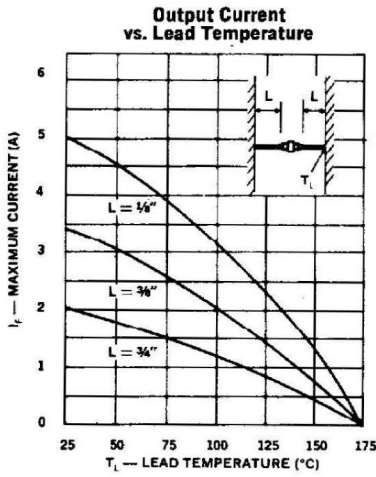
Part number	Maximum reverse voltage	Maximum forward voltage @		Maximum reverse current @ rated $V_R$		Maximum reverse recovery time*
	$V_R$	$T_J = 25^\circ\text{C}$	$T_J = 100^\circ\text{C}$	$T_J = 25^\circ\text{C}$	$T_J = 100^\circ\text{C}$	
	Volts					
UES1101	50	0.975V @ 2A	0.895V @ 2A	2	50	25
UES1102	100					
UES1103	150					

### MECHANICAL CHARACTERISTICS

Case:	Digi A
Marking:	Alpha-Numeric
Polarity:	Cathode Band



	Digi A			
	Inches		Millimeters	
	Min	Max	Min	Max
BD	-	0.095	-	2.413
BL	-	0.180	-	4.572
LD	0.028	0.032	0.711	0.813
LL	0.700	-	17.800	-



- Notes:**
- Oscilloscope: Rise time  $\leq 3$ nS; input impedance = 50 $\Omega$ .
  - Pulse Generator: Rise time  $\leq 8$ nS; source impedance 10 $\Omega$ .
  - Current viewing resistor, non-inductive, coaxial recommended.